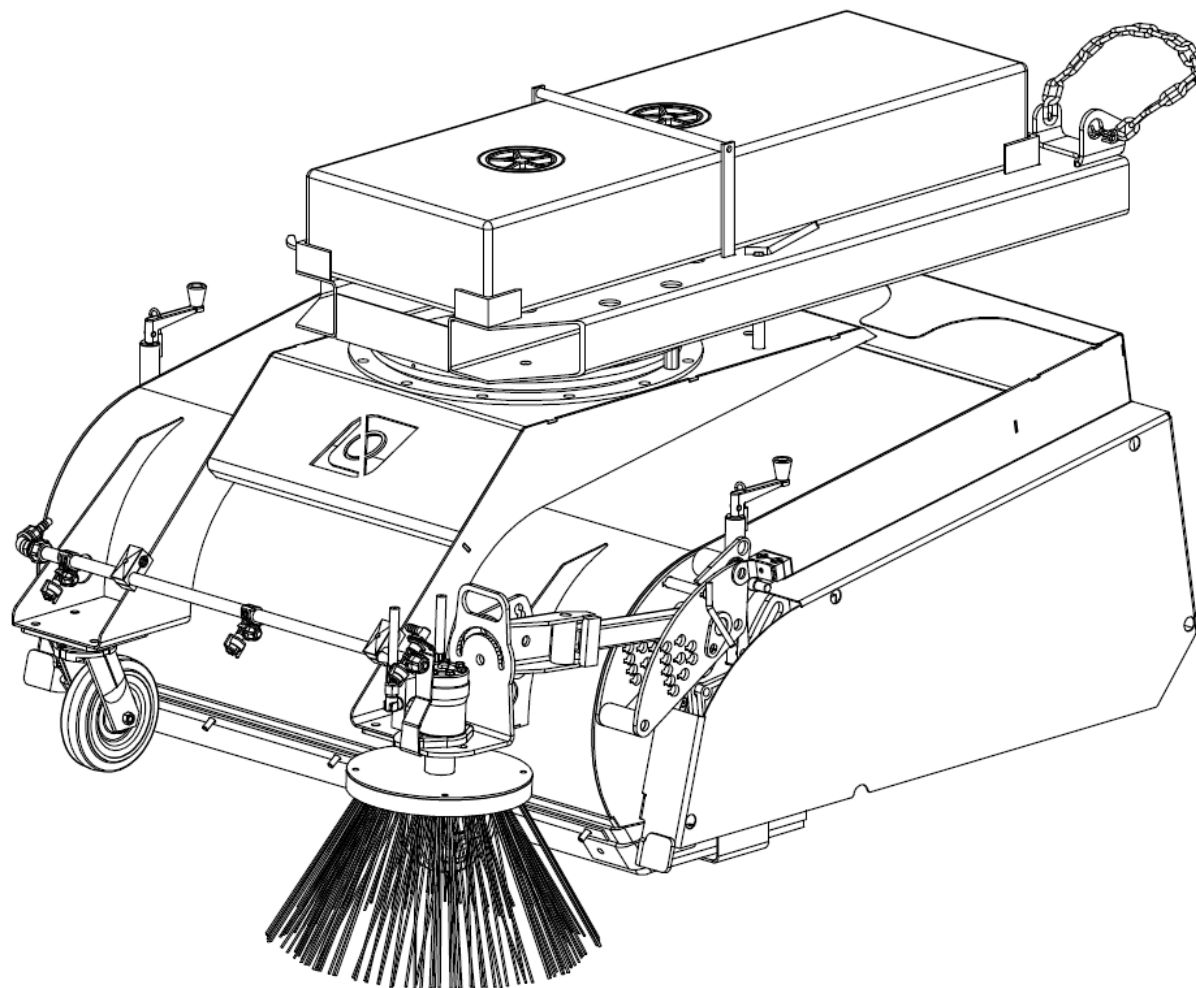


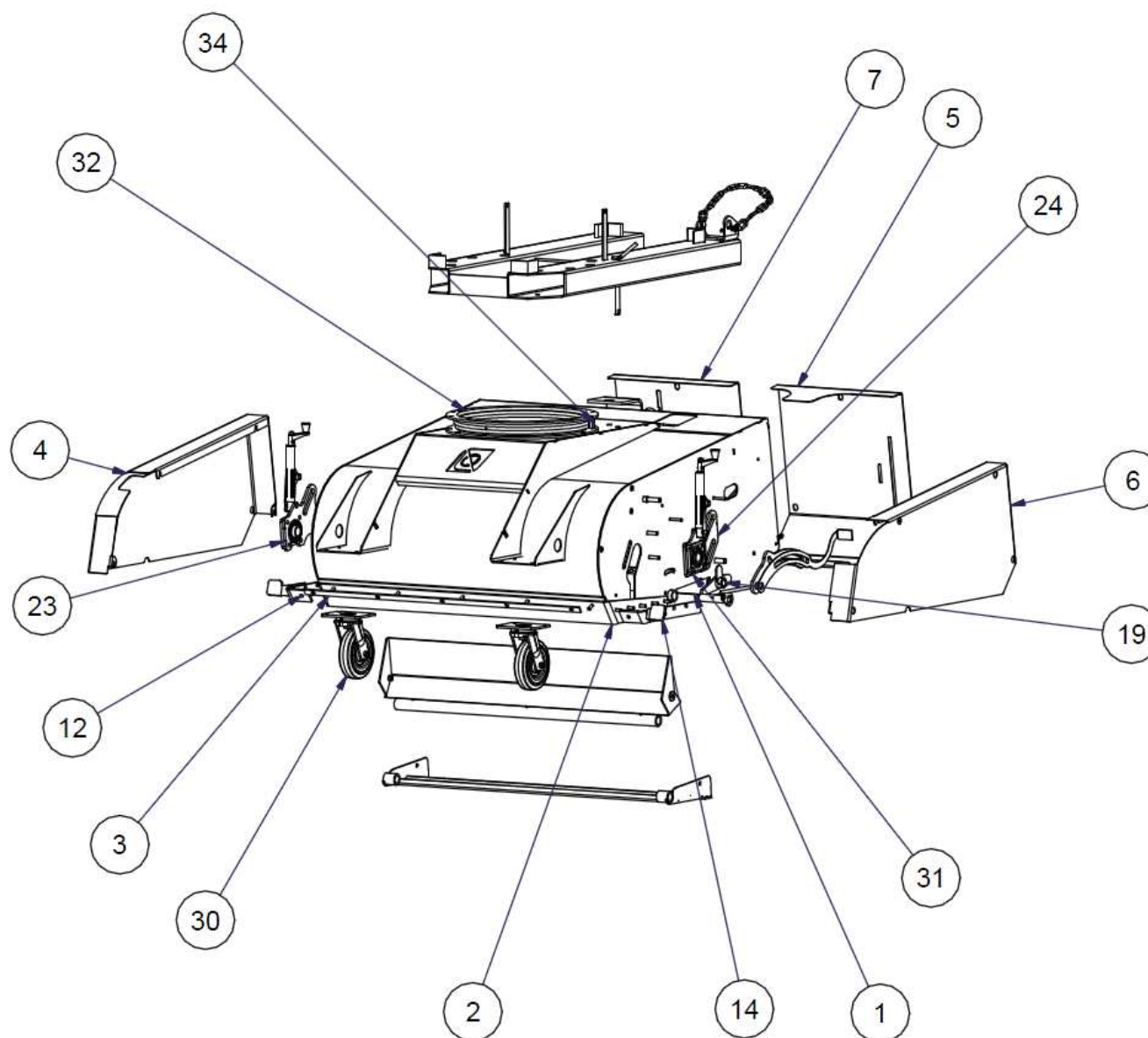
LEADER CLEAN



- General diagram
- Main brush
- Side brush
- Transmission
- Spraying
- Bare spray bar
- Pump assembly

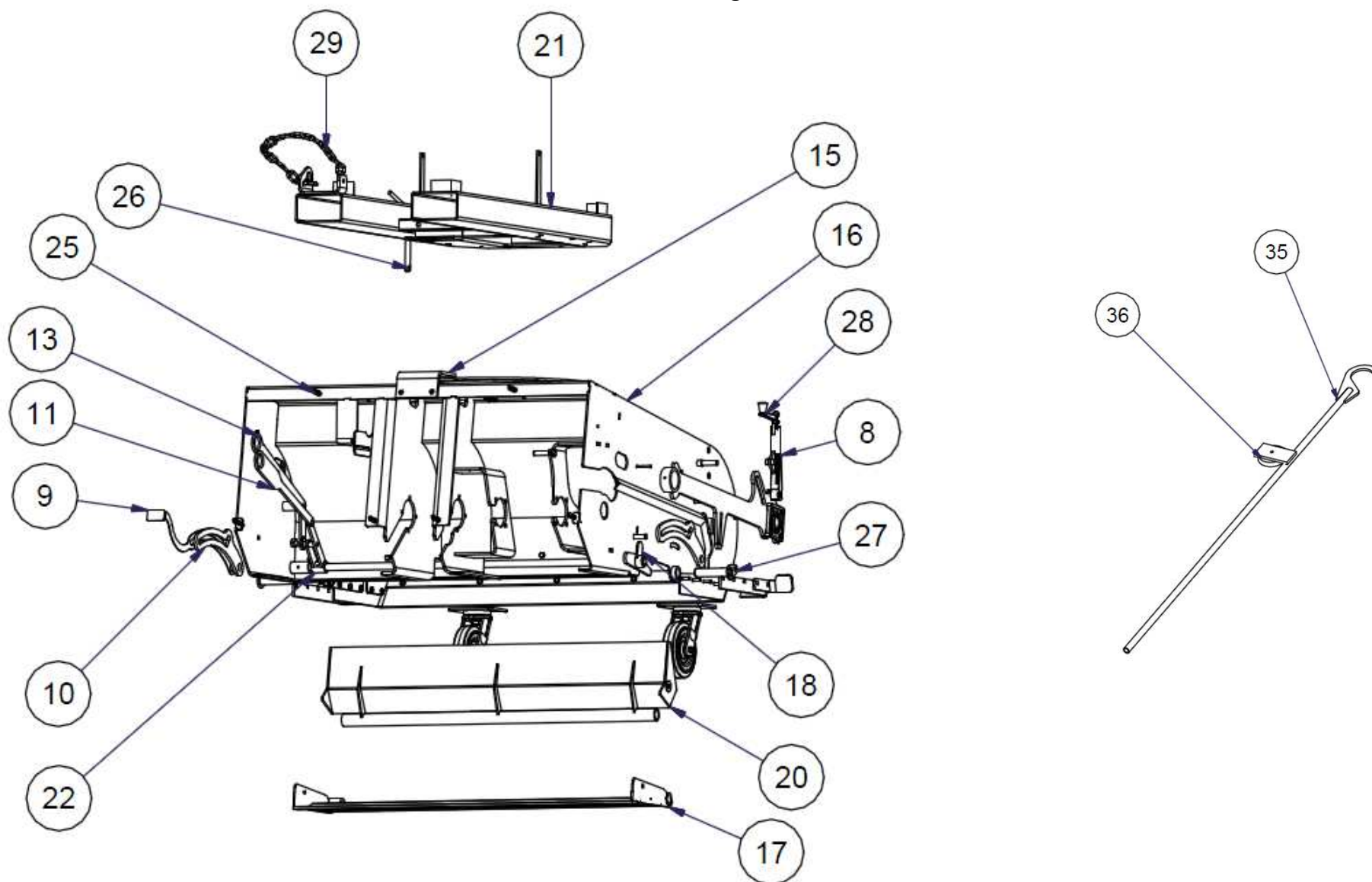
Order form on the inside of the back cover, send it to us by email magasin@emily.fr

General diagram



Order form on the inside of the back cover, send it to us by email magasin@emily.fr

General diagram



Order form on the inside of the back cover, send it to us by email magasin@emily.fr

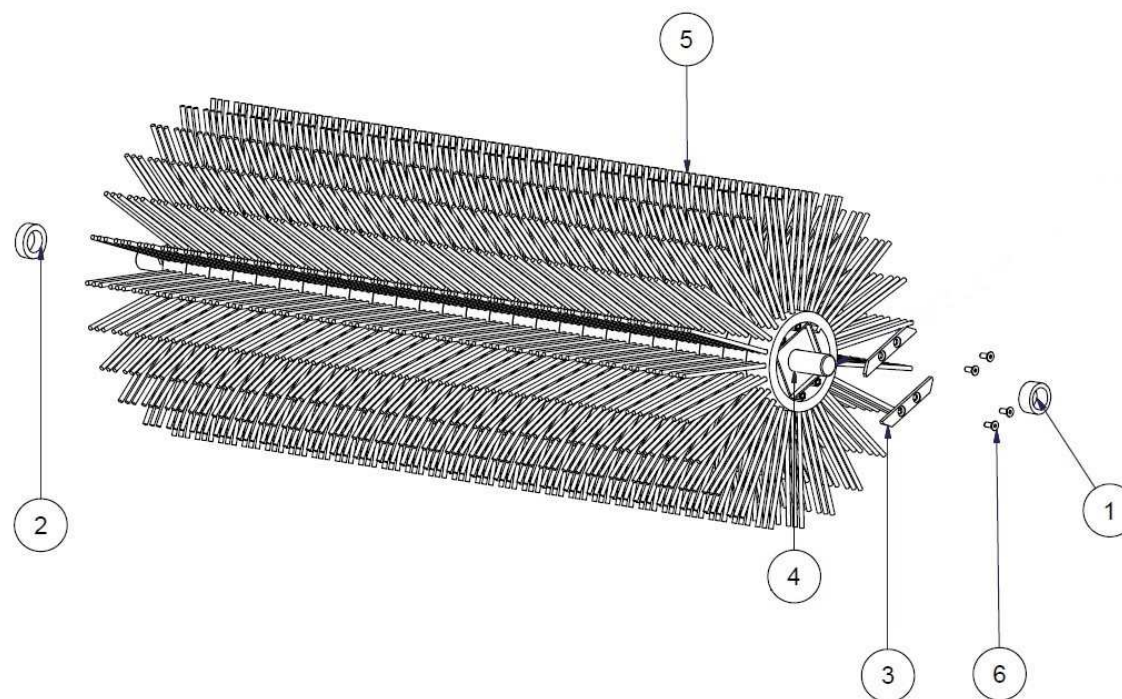
General diagram

N°	REFERENCE	NAME	QTY
1a	80pr010a-50	130 RUBBER TANK FLAP 4MM	1
1b	80pr013a-50	130 RUBBER TANK FLAP 4MM	1
2a	80pr033c-52	130 FRONT V FLAP 6MM	1
2b	80pr009y-57	130 FRONT FLAP 2MM	1
2b	80pr034c-52	160 FRONT V FLAP 6MM	1
2d	80pr010y-57	160 FRONT FLAP 2MM PU80SHORE	1
3a	98pr212b	130 FLAT FLAP	2
3b	98pr229b	160 FLAT FLAP	2
4	98pr039y	RH SIDE PANEL	1
5a	98pr047y	130 LH REAR PANEL	1
5b	98pr040y	160 LH REAR PANEL	1
6	98pr049y	LH SIDE PANEL	1
7a	98pr051y	RH REAR PANEL 130	1
7b	98pr041y	RH REAR PANEL 160	1
8	98pr053y	BRUSH ADJUSTMENT LIGHT	2
9	98pr054y	TANK CLOSED LIGHT	1
10	98pr499e	CONNECTING ROD	2
11	98pr824d	TANK CLOSE LEVER	1
12	98pr830d	FLAP REINFORCEMENT	2
13	98pr831d	TANK OPEN LEVER	1
14	98pr837d	PANEL REINFORCEMENT	2
15	ATOLEEP10-12X25	10MM FOLDED METAL PANEL	1
16a	BALCOED130	LEADER CLEAN COVER 130	1
16b	BALCOED160	LEADER CLEAN COVER 160	1
17a	BALEADBAC130	130 TANK	1

N°	REFERENCE	NAME	QTY
17b	BALEADBAC160	TANK 160	1
18	BALEADBASCULEUR-01	RH TIPPER	1
19	BALEADDECLENCHEURG	LH TRIGGER	1
20a	BALEADDEFLECTEU130	130 DEFLECTOR	1
20b	BALEADDEFLECTEU160	160 DEFLECTOR	1
21a	BALEADFOURREAU130	130 SHEATHS	1
21b	BALEADFOURREAU160	160 SHEATHS	1
22	BALEADLEVIER	TRIGGER LEVER	1
23	BALEADTRANSD	RH TRANSMISSION ARM	1
24	BALEADTRANSG	LH TRANSMISSION ARM	1
25	FATTEVERROULOQ	SWING SYSTEM LOCK	6
26	FAXES19L220	SPINDLE WITH HANDLE 19	1
27	FAXES30L130G	SPINDLE WITH BRACKET 30	2
28	FCHAN150	CRANK SUPPORT	2
29	FCROCCHaine8/16X32	LIFTING CHAIN 8 16X32 int	1m
30	FROUEATLAS	ATLAS WHEEL D=200MM	2
31	HROUL35/UCF207	BEARING BUSH SQUARE	2
32	HROULCOUR600	ROUND BAR BEFORE TRAIN	1
33	UPR077	ROTATION STOP SMALL	1
34	PC-00009751	ROTATION STOP LARGE	2
35	BALCBXCANEDEV	RELEASE ROD	1
36	FSECUPAIMANT80	MAGNETIC PIN 80MM	1

Order form on the inside of the back cover, send it to us by email magasin@emily.fr

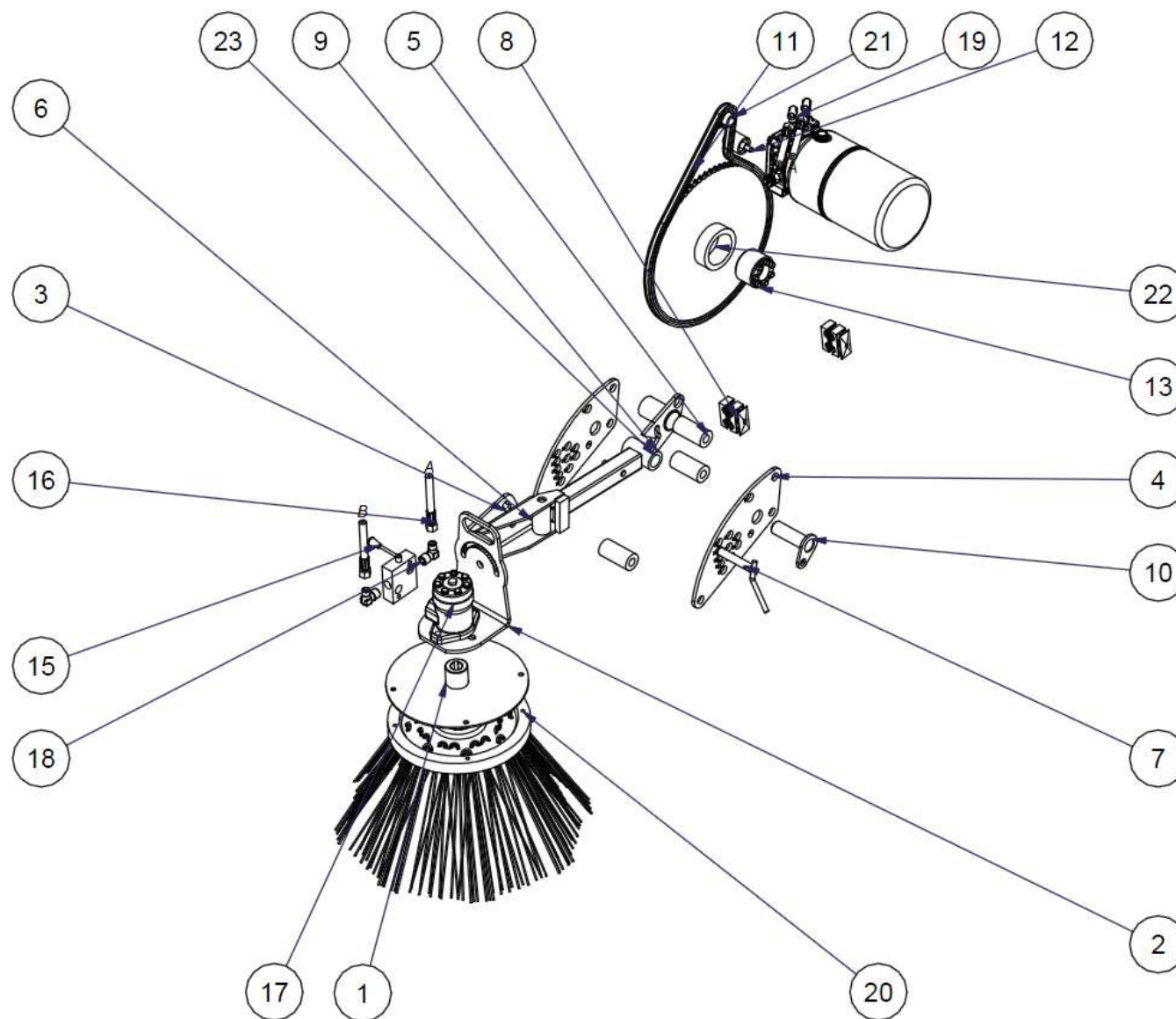
Main brush



N°	REFERENCE	NAME	QTY
1	AEBCA35.5X55	CALIBRATED PREFORM 35.5X55 L23MM	1
2	AEBCA35.5X55	CALIBRATED PREFORM 35.5X55 L17MM	1
3	PC-00006912	BRUSH RING CLAMP BAR	1
4a	BALMOYEAD130	HUB 130	1
4b	BALMOYEAD160	HUB 160	1
5a	PBROS127X550EP50PP	BRUSH WASHER 127X550 EP50	26
5b	PBROS127X550EP50PP	BRUSH WASHER 127X550 EP50	32
6	VFHC8X25CL10,9	FHC BOLT 8X25 10.9	4

Order form on the inside of the back cover, send it to us by email magasin@emily.fr

Side brush

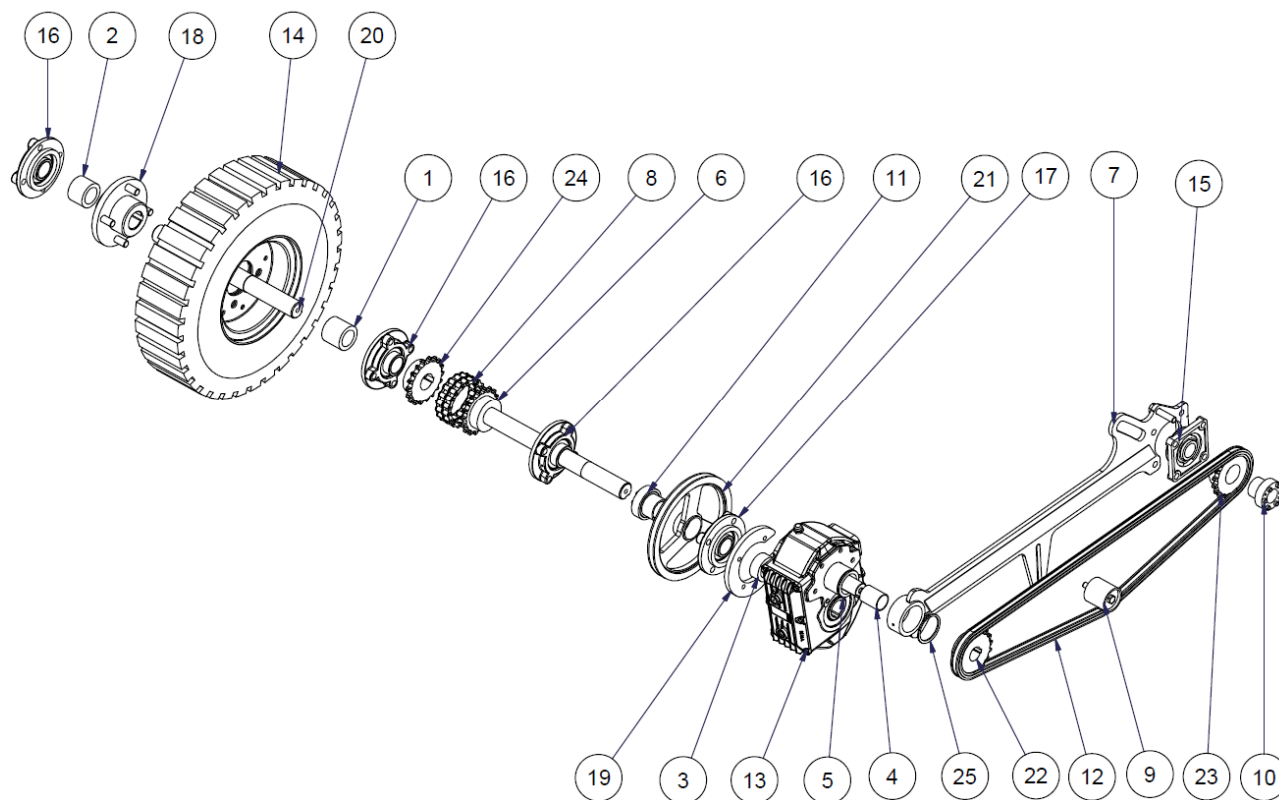


Order form on the inside of the back cover, send it to us by email magasin@emily.fr

Side brush

N°	REFERENCE	NAME	QTY
1	BALPLAT045	SIDE BRUSH PLATE 315/600	1
2	98pr262d	SIDE BRUSH MOTOR SUPPORT	1
3	98pr263d	SIDE BRUSH ARTICULATION	1
4	98PR817D	SIDE BRUSH MULTI ADJUSTER	2
5	ATMEC40EP10	MECHANICAL PREFORM 40X10mm L82mm	3
6	BALORBLAT	REMOVABLE SIDE BRUSH ORIENTATION	1
7	EMIAXE18L98	SPINDLE WITH HANDLE 18 L98MM	1
8a	VCOLL3/8	STAUFF CLAMP 3/8	4
8b	VCOLL3/8P	STAUFF PLATE 3/8	2
9	98pr861d	SIDE TAB	1
10	FAXES30L100	SPINDLE WITH BRACKET 30 L100MM	1
11	FCHAICS10BP15,875-90	SINGLE CHAIN 10B1, PITCH 15.875 89 LINKS + 1 CONNECTING LINK	1
12	FCHAIGAT40X45M10	TENSIONING ROLLER D=40 L=45 THREAD M10	1
13	FCHAIMOY40X75	CYLINDRICAL CLAMPING HUB RCK11 40X75	1
14	HCENT0001	CENTRAL HYDRAULIC UNIT MC1	1
15	HDIST4V3PEPM	4 WAY MANIFOLD, 3 POSITIONS FLANGE EPM/EPRM MOTOR	1
16	HFLEXR11/42400	FLEXIBLE HOSE 1/4 1 BRAID L2400MM	2
17a	HMOTEEP25	EPM MOTOR 25 D 25mm	1
17b	HPJNTMEPM	PACK OF EPM MOTOR SEALS	1
18	HRACHCM1215X21	MALE ELBOW 12 15/21 CONICAL	2
19	HRACHCM128X13	ELBOW M12 8X13 PLAIN BEND	2
20	PBROSL315X550M	SIDE BRUSH 315/600 MIXED PP/STEEL	1
21	UPR203	BORE+KEY WAY 9 TOOTH GEAR WHEEL PITCH 15.875, CHAIN 10B	1
22	UPR210	ROLLER CHAIN WHEEL WITH 57 TEETH	1
23	BALEADBRASBALAILAT	SIDE BRUSH ARM	1

Transmission

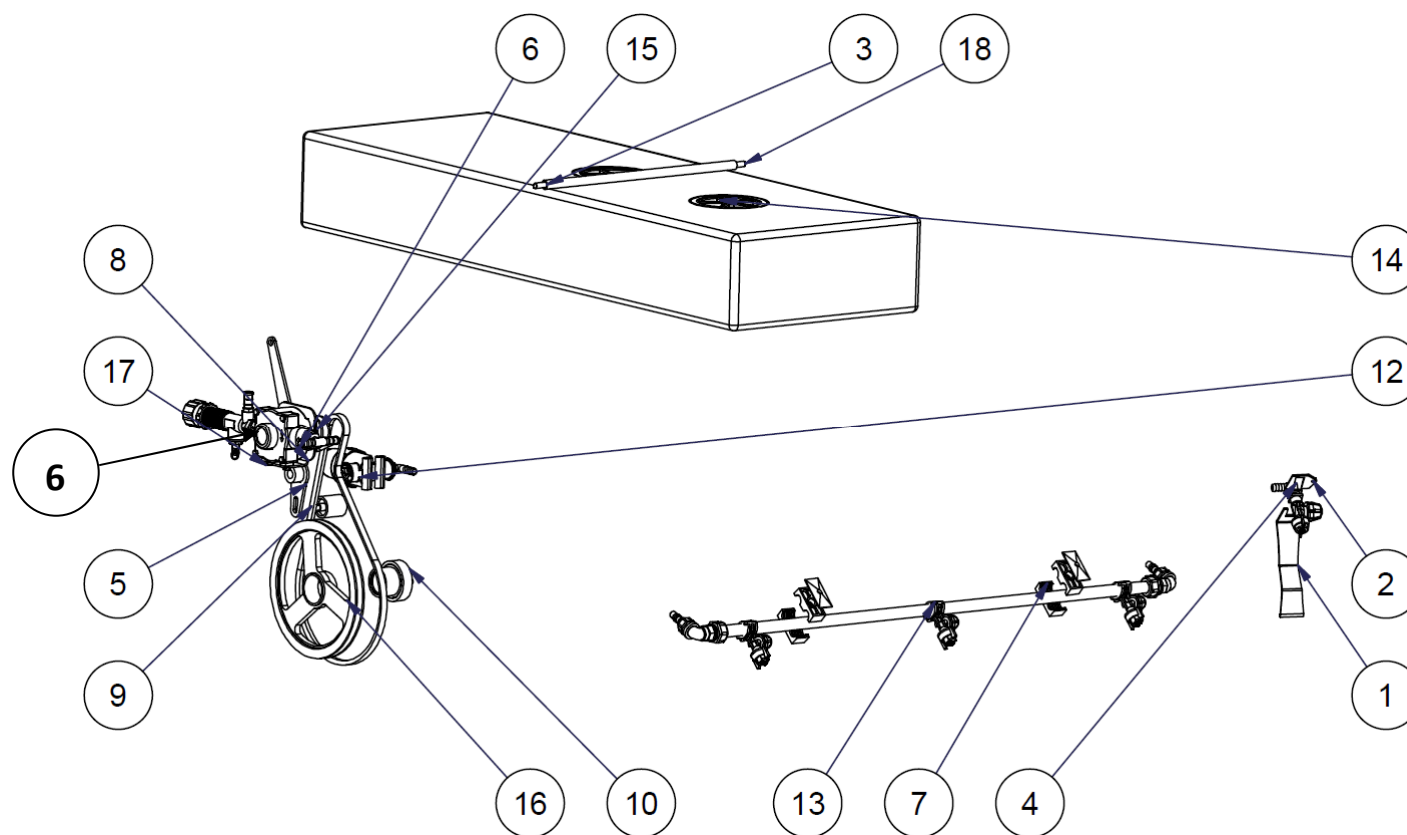


Order form on the inside of the back cover, send it to us by email magasin@emily.fr

Transmission

N°	REFERENCE	NAME	QTY
1	AEBCA40.5X60	CALIBRATED PREFORM 40.5X60 L53MM	1
2	AEBCA40.5X60	CALIBRATED PREFORM 40.5X60 L43MM	1
3	AEBCA40.5X60	CALIBRATED PREFORM 40.5X60 L28MM	1
4	ATRON40EP2	ROUND TUBE 40 TH. 2MM L51MM	1
5	BALEADBASCULEUR-01	RH TIPPER	1
6a	BALEADTRANS130	GEARED REDUCER TRANSMISSION 1M30	1
6b	BALEADTRANS160	GEARED REDUCER TRANSMISSION 1M60	1
7	BALEADTRANSD	RH TRANSMISSION ARM	1
8	FCHAICD12B2P19.05-18	DOUBLE WP CHAIN 12B2, PITCH 19.05, 17 LINKS + 1 CONNECTING LINK	1
9	FCHAIGAT60X60M12	TENSIONING ROLLER D=60 L=60MM	1
10	FCHAIMOY35X47	CYLINDRICAL CLAMPING HUB RCK 80 35X47	1
11	FCHAIMOY40X53	CYLINDRICAL CLAMPING HUB RCK 80 40X53	1
12	FCHAICS12BP19.05-108	SINGLE SEAL CHAIN 12B, PITCH 19.05, 107 LINKS + 1 CONNECTING LINK	1
13	HREDUZBM6005	ZBM REDUCER 6005,406,050	1
14	FROUERC6.0X9-10	COMPLETE WHEEL 6,00"X9/10	1
15	HROUL35/UCF207	BEARING BUSH SQUARE BASE 35	1
16	HROUL40	BEARING BUSH 4 HOLES 40MM TYPE UCFC208	3
17	HROUL40-01	BEARING BUSH 4 HOLES 40MM TYPE UCFC208-SKF	1
18	OPR018	WHEEL HUB ASSEMBLY	1
19	OPR103	THREAD 98pr233f	1
20	UPR177	MAIN WHEEL SHAFT 42/40	1
21	FCHAIPOTRAP250-01	CAST IRON TRAPEZOIDAL PULLEY Ø250	1
22	UPR221	BORE+KEY WAY GEAR WHEEL 12B 18 TEETH	1
23	UPR222	BORE GEAR WHEEL 12B 18 TEETH	1
24	UPR239	BORE+KEY WAY GEAR WHEEL 12B 18 TEETH	1
25	VCIREXT65	EXTERNAL CIRCLIP D=65MM	1

Spraying



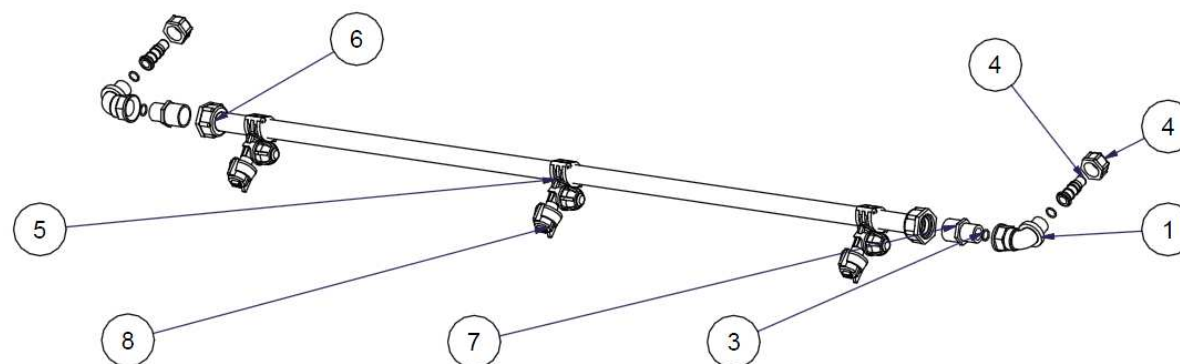
Order form on the inside of the back cover, send it to us by email magasin@emily.fr

Spraying

N°	REFERENCE	NAME	QTY
1	98PR034X	SIDE BRUSH SPRAY SUPPORT	1
2	98PR035X	SIDE BRUSH NOZZLE LOCK	1
3	ATRON17,2EP2	ROUND TUBE 17.2 TH. 2mm	1
4a	HARROPBMONOB	SINGLE JET NOZZLE HOLDER	1
4b	HARROPBTRIB	TRIPLE JET NOZZLE HOLDER	1
5	BALEADLEVIERHYPRO	HYPRO SINK ASSEMBLY	1
6	HARROPOMPEHYPRO-N	HYPRO PUMP 6500N	1
7a	VCOLL1/2	STAUFF CLAMP 1/2	4
7b	VCOLL1/2P	STAUFF PLATE 1/2	2
8	BALEADPOMPE	PUMP SUPPORT	1
9	FCHAIGAT40X45M10	TENSIONING ROLLER D=40 L=45 THREAD M10	1
10	FCHAIMOY40X53	CYLINDRICAL CLAMPING HUB RCK 80 40X53	1
11	FCOUR0001	TEXROPE TRAPEZOIDAL BELT S84 'A44'	1
12	HARROFILTRE	COMPLETE FILTER 1/2 FEMALE	1
13a	HARRORAMPE3	ST. STEEL BAR 1.3 METRES / 3 HOLES	1
13b	HARRORAMPE4	ST. STEEL BAR 1.6 METRES / 4 HOLES	1
14	PCUVE100-02	100L TANK N226 BLACK 1300X440X180	1
15	UPR197	TRAPEZOIDAL PULLEY 55.5 BORE + THREAD	1
16	FCHAIPOTRAP250-01	CAST IRON TRAPEZOIDAL PULLEY Ø250	1
18	VTF10	10 MM THREADED BAR L490MM	1
19	VH5/16X3/4	BOLT 5/16" X 3/4"	2

Order form on the inside of the back cover, send it to us by email magasin@emily.fr

Bare spray bar

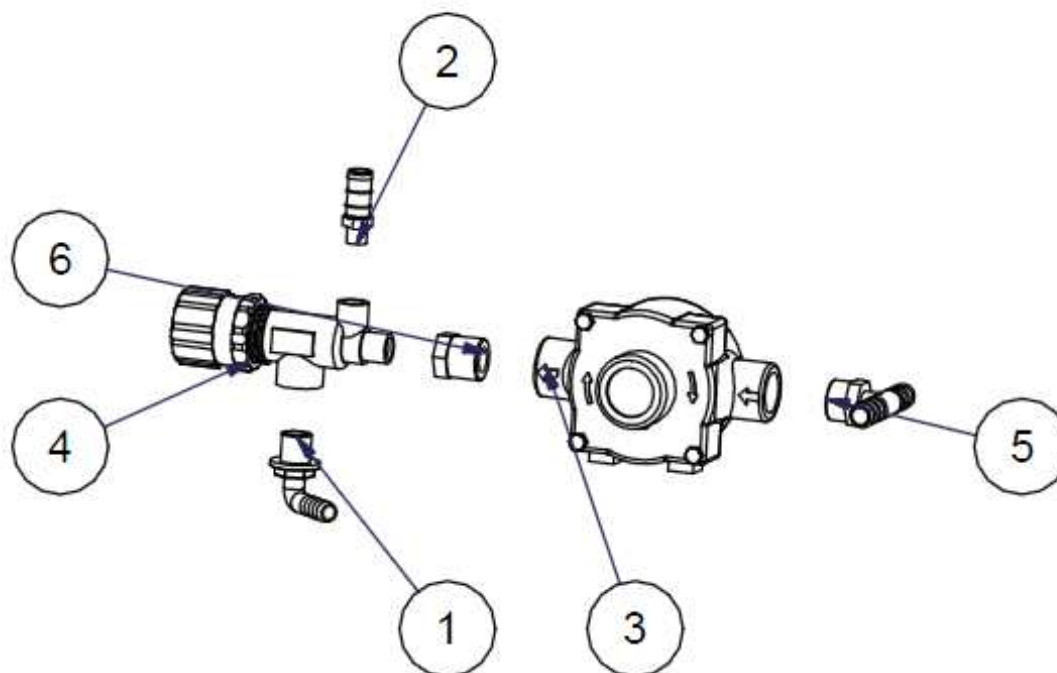


Order form on the inside of the back cover, send it to us by email magasin@emily.fr

Bare spray bar

N°	REFERENCE	NAME	QTY
1	HARROCM1/2	ELBOW 1/2"RG/2" M/F	2
2	HARROE1/2RG	NUT 1/2" RG FOR HE BAR	2
3	HARROJCOUDRAMP	SEAL FOR HE BAR ELBOW 13X19X2.5	4
4	HARROMAM12	RIGHT NIPPLE D=12MM FOR HE BAR	2
5a	HARROPBMONOR	SINGLE JET BAR NOZZLE HOLDER	X
5b	HARROPBTRIR	TRIPLE JET BAR NOZZLE HOLDER	X
6a	HARRORAMPE3	3 JET ST. STEEL BAR	1
6b	HARRORAMPE4	4 JET ST. STEEL BAR	1
7	HARROUDR3/4X1/2	REDUCER 3/4M X 1/2M	2
8a	HARROBUSEM	FASCAP NOZZLE API 11005 BROWN	X
8b	HARROBUSEJ	FASCAP NOZZLE API 11002 YELLOW	X
8c	HARROBUSEB	BLUE NOZZLE	X

Pump assembly



Order form on the inside of the back cover, send it to us by email magasin@emily.fr

Pump assembly

N°	REFERENCE	NAME	QTY
1	HARROCM1/2D13	MALE ELBOW 1/2 D=13	1
2	HARROMAM1-4X13	STRAIGHT NIPPLE 1/4 13MM	1
3	HARROPOMPEHYPRO-N	HYPRO PUMP 6500N	1
4	HARROREGUL1/2	M/F 1/2 PISTON PRESSURE REGULATOR	1
5	HARROTM3/4-13	MALE TEE 3/4 - 13MM	1
6	HARROUM3/4UF1/2	REDUCER M3/4 F1/2	1



ORDER FORM

Date of order:

Requested delivery date:

Customer account n°:

Order ref.:

Contact:

Customer reference:

Invoice address:

Delivery address:

Mode of transport: CourierExpressGrouped

IN ORDER TO REDUCE THE LEAD TIME AS MUCH AS POSSIBLE, PLEASE INCLUDE THE REFERENCES OF THE ITEMS ORDERED

Reference:	Name	Qty	Tariff price.	Amount excl. VAT	Availability
					Column reserved for use by EMILY

Observations:

Sub-Total:
Discount in %:
Net amount excl. VAT:
SHIPPING:
TOTAL excl. VAT:

Order form on the inside of the back cover, send it to us by email magasin@emily.fr



Placing an order with EMILY implies the customer's acceptance of the general sales conditions below.

1 - General clause – Prices:

Our sales are subject to the present general terms and conditions which prevail over all purchase conditions, unless we expressly waive them.

Our prices are in Euros, excluding taxes, packaging and transport. The applicable prices are those in force on the day of the order, in compliance with the general price lists or the quotations Issued. The characteristics and information contained in our price lists and commercial documents are not contractual and may be modified at any time without notice.

2 - Orders:

All verbal orders must be confirmed in writing. The tool attachment plan must be enclosed with the valid order and signed by the customer after verification, along with the plan of the tool for non-standard orders. First orders will only be processed after the opening of a customer account and acceptance by the customer of EMILY's terms of payment.

3 - Confidentiality:

The studies, plans, drawings and documents provided or sent by EMILY remain our property; they may not be communicated to third parties under any circumstances by the buyer.

4 - Lead-times, delivery, transport:

Our lead-times are only provided as an indication. We reserve the right to split orders according to the respective production of our factory. We reserve the right to choose the carrier and the mode of transport. In the event that the customer imposes the choice of carrier, the customer shall automatically bear the transport costs and the transport guarantee. Claims related to the transport and receipt conditions may only be accepted if they are in writing made on the carrier's delivery note.

5 - Retention of title:

Law n° 80 335 dated 12 May 1980. EMILY retains ownership of the goods sold until the effective payment of the full price in principal and accessories. Cheques, promissory notes, bills of exchange and assignments of receivables are only considered as means of payment from the date of their effective collection. Failure to pay one of the due dates may result in EMILY reclaiming the goods, regardless of where they are located. These provisions do not prevent the transfer to the buyer, upon delivery, of the risks of loss and deterioration of the goods sold as well as the damage they may cause. The customer shall take out insurance from the time of delivery covering the risks that the products may incur or cause. The customer shall inform EMILY of any intervention or claim by a third party likely to infringe its rights on the products so that the latter can oppose it and take any protective measure to preserve its rights. The buyer undertakes to inform its customers of this retention of title clause.

Terms of payment - Penalties:

For the first order, the balance must be paid before shipment. When a cheque or bill of exchange is handed over, the payment is only deemed to have been made when it is finally cashed: the buyer is forbidden to use it as a guarantee. Any dispute relating to the invoice must be made within eight days of receipt of the invoice. EMILY retains the property of the goods until full and final payment of their price. Any delay in payment may, in the absence of regularisation within 8 days of formal notice sent by registered letter with acknowledgement of receipt, lead to the application of a late payment penalty at the ECB refinancing rate plus 10 points. Likewise, any delay in payment shall render payable a fixed indemnity for collection costs of 40 Euros.

6 - Warranty:

All warranty claims can only be considered with our prior written agreement. EMILY is responsible for supplying a product free of any defect that could make it unfit for its intended use. To this end, the customer undertakes to provide all necessary documents and information. The goods sold are guaranteed against any operating defect resulting from a material, manufacturing or design fault

under the conditions below. The malfunction must appear within a period of 6 months from delivery for use of the goods in accordance with the order and our recommendations. The warranty is limited to the repair or replacement of defective parts, with regard to material or manufacturing defects. Under no circumstances shall this warranty be extended by the period of repair or non-use of the equipment. It does not cover transportation, transfer, labour or other costs incurred in carrying out repairs under warranty. EMILY shall not be liable for damages resulting from machine downtime, even if related to a warranty repair, or for any other damages, including without limitation, consequential, incidental, special, excessive or financial damages, (including without limitation, any business interruption or loss of present or future profits) resulting from a defect or failure of the equipment. In the event that the customer is aware of a defect or risk of defect in its supply, whatever its nature, it undertakes to inform EMILY as soon as possible, in order to prevent any difficulties. The warranty will not be valid in the following situations:

- Damage resulting from negligence, for example, incorrect operation or lack of maintenance and care.
- Damage due to misuse, carelessness or accidents, for example, incorrect use, transport or storage, unsuitable operation or physical environment, removal or alteration of identification labels on products or parts, or failure caused by a product for which the supplier is not responsible, fire, negligence and any other cause not directly attributable to the supplier.
- Damage due to normal wear and tear of products or parts.
- Replacements, repairs, alterations, or defective modifications made without the express permission of the supplier.
- Use of parts or components not approved by the supplier.
- Damage during assembly, installation and repair that the supplier has not carried out.
- Damage because EMILY's instructions have not been followed.
- Damage because EMILY's guidelines for use have not been followed.
- Failure to pay in accordance with the terms agreed with the supplier.

For any request for a parts warranty, please provide us with the serial number of the equipment. Any returns of equipment will be handled by the dealer and at its expense (no freight-collect shipments will be accepted). The provisions of this charter apply equally to customers, both French or foreign, and it is the responsibility of the latter to inform themselves of the extent of French and more generally Community legal obligations incumbent on EMILY.

7 - Rightful termination clause:

In the event of non-fulfilment by one party of its obligations, this contract shall be rightfully terminated in favour of the other party without prejudice to any damages that may be claimed from the defaulting party. The termination will take effect 10 days after a formal notice has been sent and has remained unanswered.

8 - Settlement of disputes - Liability:

Unless otherwise stipulated, our prices are always for currently manufactured articles, made of normal grade metal and without commissioning. The nominal loads provided are simply indications. The parts supplied are used at the user's own responsibility. In the event of breakage of a part, our liability is strictly limited to the replacement of the part, if it is recognised as defective, and does not cover any damage caused by this breakage. In the event of a dispute between the parties, the Commercial Court of Brest shall have sole jurisdiction in the matter, in spite of any contradictory clauses that may appear on our customers' order forms. French law is applicable to these general terms and conditions of sale, prevailing over any general terms and conditions of purchase which may be contrary to them.